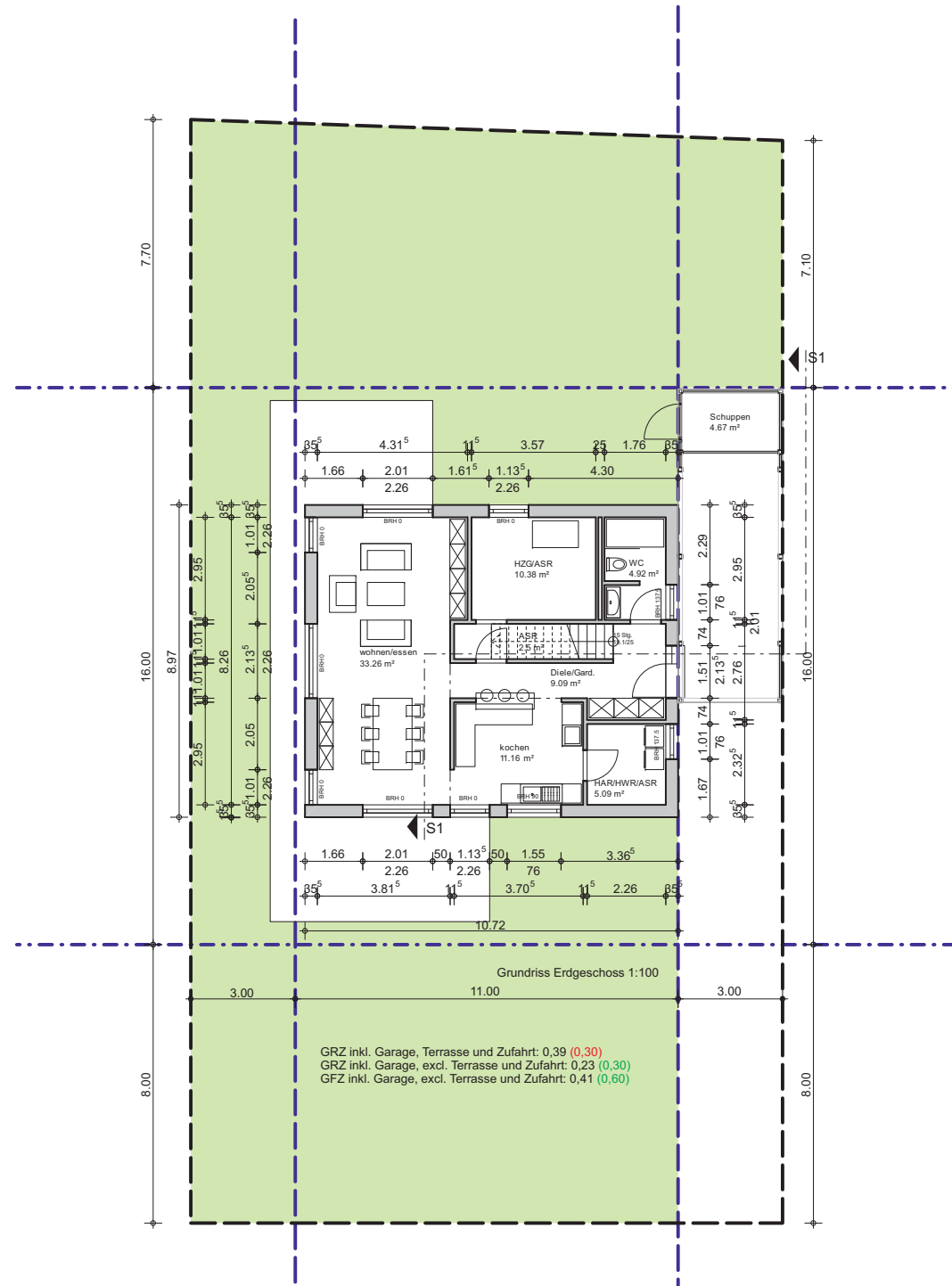
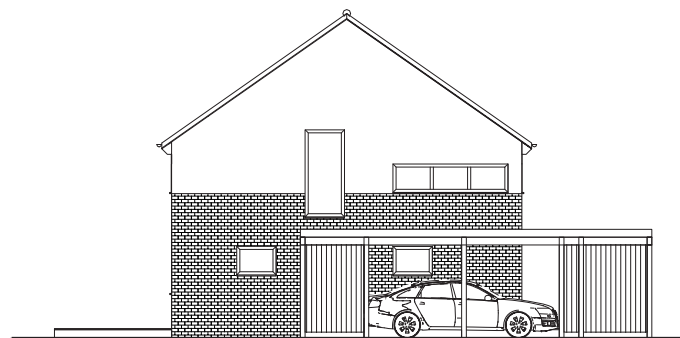
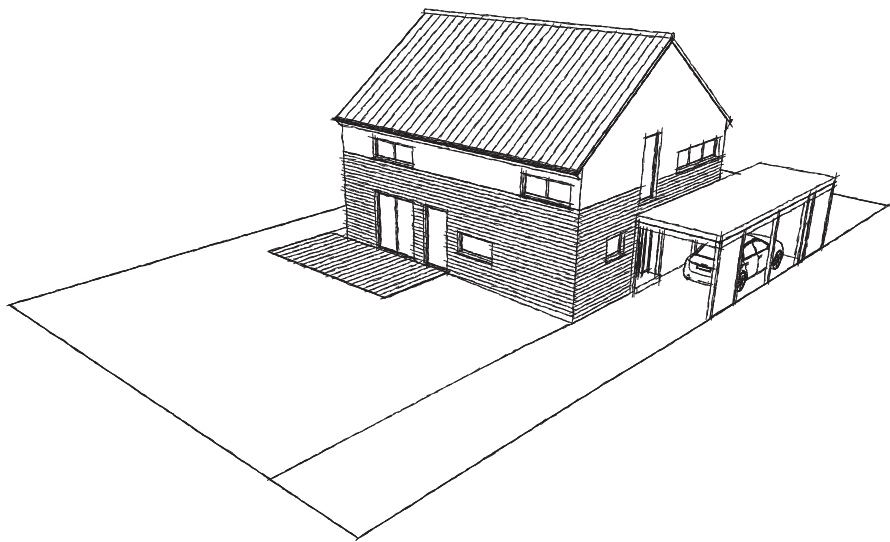
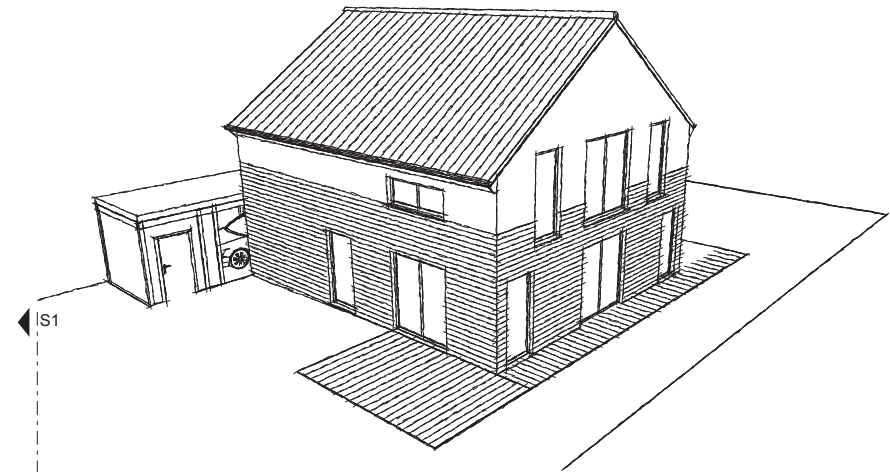
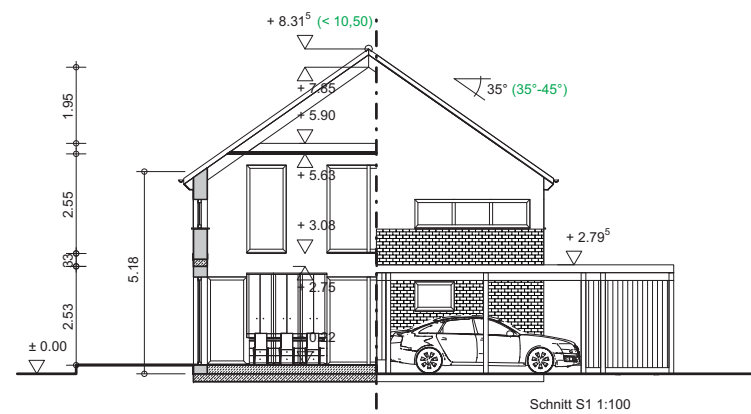
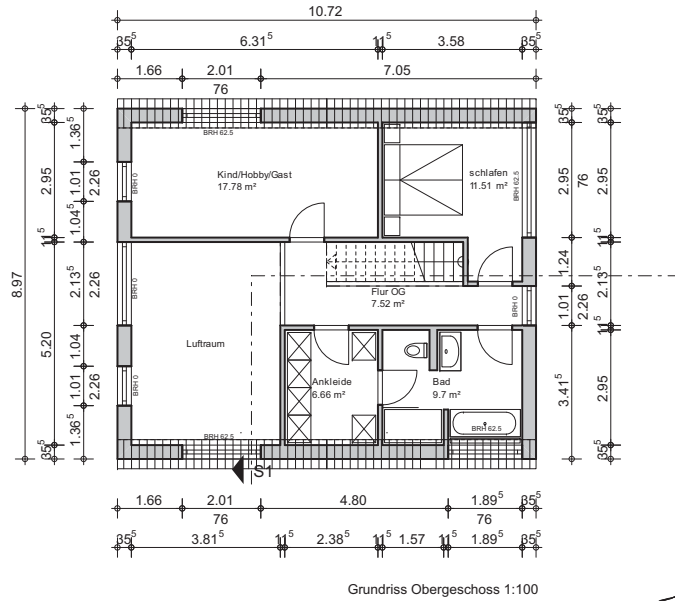


# Vorentwurf 1- Neubau eines 1-Familienhauses Familie Mustermann - Teststrasse 1, 32429 Minden

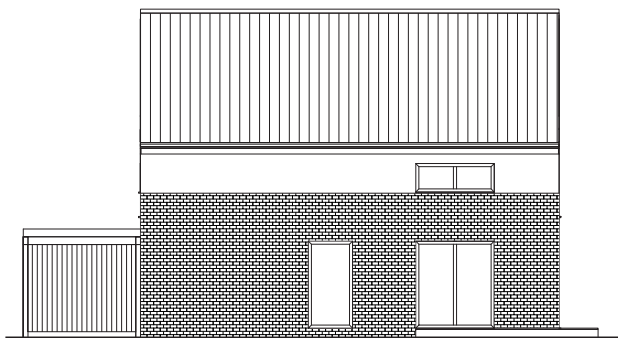
dipl.-ing. architekt claus-w.trognitz - am kohlgaben 69 - 32429 minden  
tel. 0571 - 40 41 80 71 - fax. 0571 - 40 41 80 72 - archPUNKT@t-online.de



Flächen		Testentwurf	
Raum	Lage	soll	
Diele/Garderobe	EG	9,09m²	
HAR/HWR/ASR	EG	5,09m²	
kochen	EG	11,16m²	
wohnen/essen	EG	33,26m²	
HZG/ASR	EG	10,38m²	
ASR	EG	2,50m²	
WC	EG	4,92m²	76,40m²
Flur	OG	7,52m²	
Bad	OG	9,70m²	
Ankleide	OG	6,66m²	
Kind/Hobby/Gast	OG	17,78m²	
schlafen	OG	11,51m²	83,17m²
<b>Summe Flächen EG/OG:</b>		<b>129,57m²</b>	
Spitzboden	SB	19,24m²	19,24m²
Schuppen		4,67m²	4,67m²
<b>Summe Flächen gesamt:</b>		<b>153,48m²</b>	



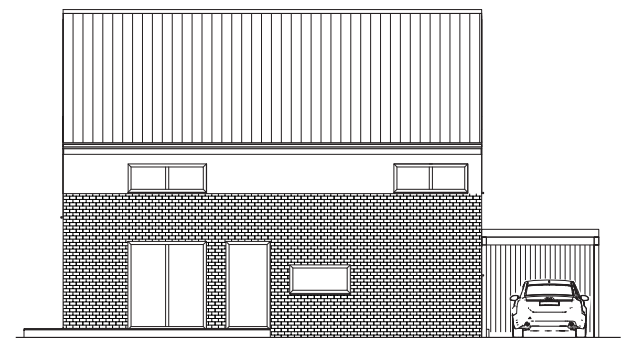
Ansicht Süd-Ost 1:100



Ansicht Nord-Ost 1:100



Ansicht Nord-West 1:100



Ansicht Süd-West 1:100